



# GMT MONTHLY MEMBERSHIP PROGRESS REPORT

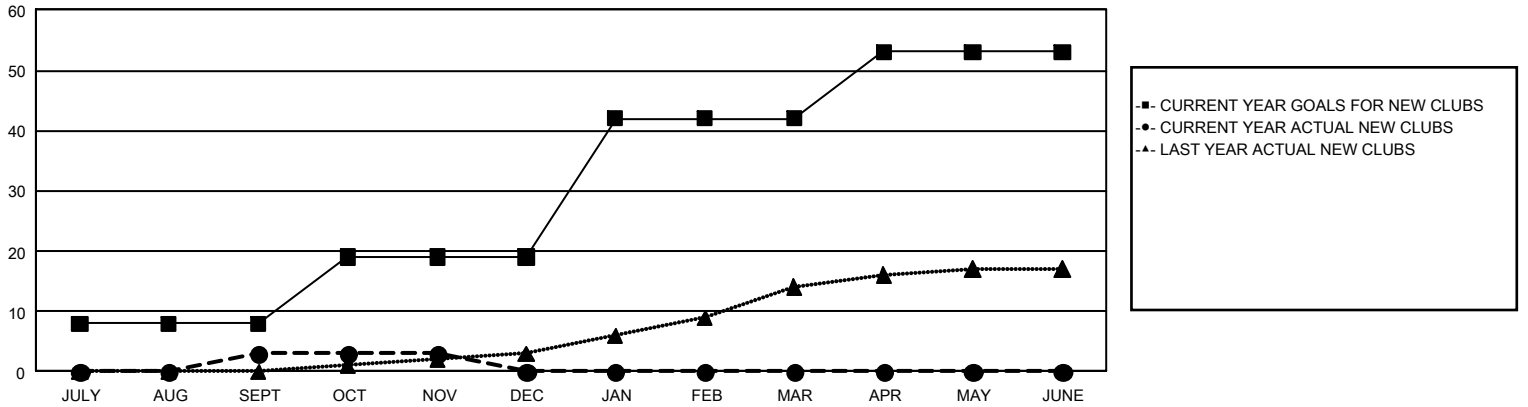
## GAT Constitutional Area 5 - Japan

Results as of: 11/30/2023

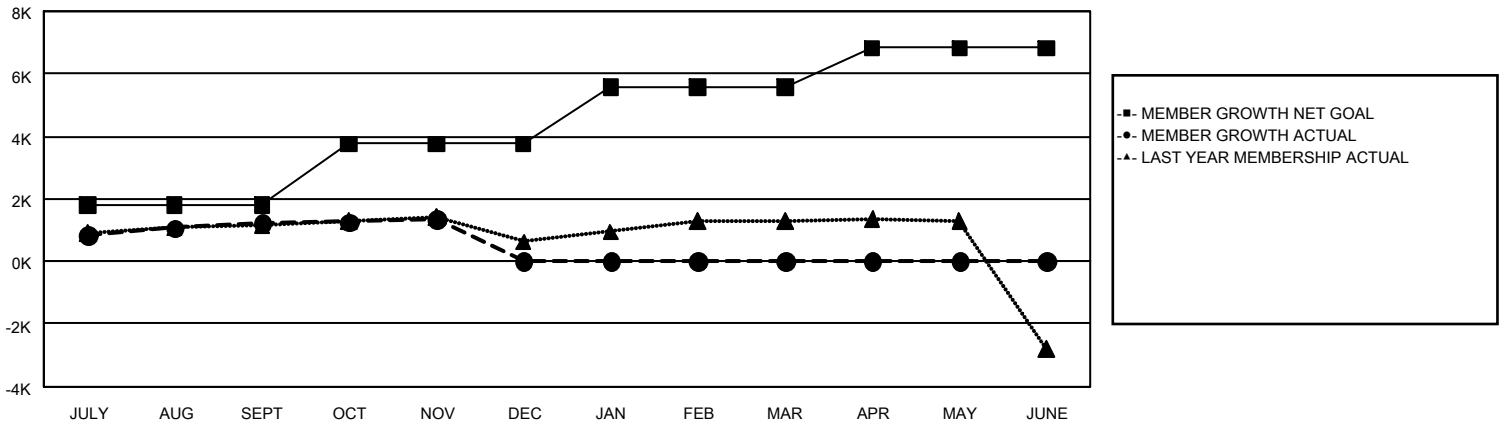
REPORT DOES NOT INCLUDE CLUBS IN UNDISTRICTED AREAS.

Clubs				Members			
RESULTS FOR 2023-2024				RESULTS FOR 2023-2024			
QUARTER	NEW CLUB GOAL	NEW CLUBS	DROPPED CLUBS	QUARTER	MEMBER GROWTH NET GOAL	MEMBER GROWTH ACTUAL	DROPPED MEMBERS ACTUAL (including transfers)
JULY/AUG/SEPT	8	3	3	JULY/AUG/SEPT	1,795	2,926	1,552
OCT/NOV/DEC	11	0	1	OCT/NOV/DEC	1,969	924	764
JAN/FEB/MAR	23	0	0	JAN/FEB/MAR	1,797	0	0
APR/MAY/JUNE	11	0	0	APR/MAY/JUNE	1,261	0	0

**GOALS AND ACTUAL NEW CLUBS CUMULATIVE**



**GOALS AND ACTUAL MEMBERS CUMULATIVE**



DROPPED CLUBS: 4	1,482 CLUBS OF 2,760 ADDED 1 OR MORE NEW MEMBERS	<b>GENDER DISTRIBUTION</b>
<b>DROPPED MEMBERS</b>		MALE                    74,910 (76.65%)
DECEASED                    300		FEMALE                    22,813 (23.34%)
CLUB CANCELLED                    0	<a href="#">CLICK HERE FOR CUMULATIVE MEMBERSHIP DATA</a>	TOTAL FAMILY UNIT MEMBERS                    31,116
OTHER                    2,016		FAMILY MEMBERS PAYING HALF DUES                    17,219
<b>TOTAL                    2,316</b>		